

# WEARMAX

floor renovation for leisure environments

**WEARMAX**<sup>®</sup> by  
*High Performance Ceramic Coating*



[www.wearmaxbysamsic.co.uk](http://www.wearmaxbysamsic.co.uk)



**Hard floors take a knock in leisure and sports environments.**

**After time, high traffic wear and tear force up repair and maintenance budgets.**

**Replacement is costly and demands days of downtime.**

**That's why more businesses are turning to restoration - and the Wearmax Ceramic Coating from Samsic.**

**The world's first high-performance floor coating with ceramic particles embedded into its surface layer, Wearmax offers the option to restore existing finishes or re-colourise them to your design requirements.**

**Warranted for up to 10 years**, Wearmax significantly increases the lifespan and appearance of floors.

A typical 500 sq m application of Wearmax clear finish offers an **80% saving** in time against floor maintenance and **up to 60%** in capital expenditure (capex).

It offers savings of **up to 50%** on core cleaning costs.

More than just another sealant, Wearmax innovates through the suspension of **120 million ceramic particles** per square metre within its surface coat.

That makes it highly effective against signs of wear, abrasion and dirt adhesion, while also providing slip-resistance of typically **36+ (BS7976)**.

Reduced dirt adhesion makes its maintenance far easier. There's no more need for polishing, buffing, application of maintainer, or stripping and sealing.

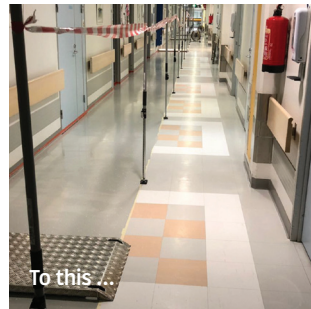
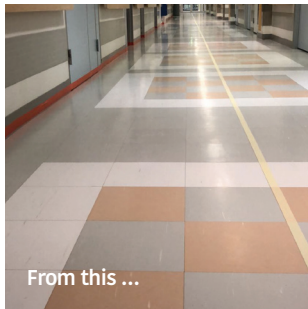
And being **water based** and simple to clean using **less chemical use and waste**, it's also **environmentally-friendly**.

# INNOVATIVE

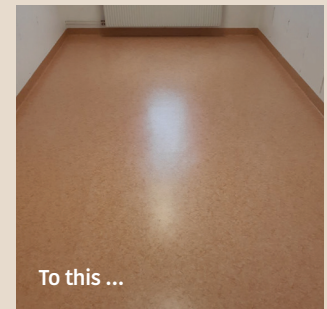
Versatile Wearmax is unlike any other surface treatment.

Its innovative use of ceramic particles within its constituent structure drives up a treated floor's performance characteristics - drives down its maintenance needs and costs.

It can be applied over almost any flooring including **vinyl, linoleum, wooden and parquet floors, natural rubber and synthetic rubber flooring**, and **varnished surfaces** as well as **approved mineral floors**.



Split-applying Wearmax (left) enabling the continued use of resources ...



Linoleum starting to look its age gets a new lease of life with this colour application of Wearmax...

# SUSTAINABLE

Last year, the UK disposed over **65,000** tonnes of used vinyl floors in landfill sites.

Their replacement required the use of solvents, thinners, chemicals and strippers, the residue of which went to waste streams.

Wearmax has **zero impact** on landfill and does **not require** the use of any of the above in application nor maintenance.

**A real bonus to your business's sustainability performance,** Wearmax increases the lifespan of already heavily worn floors and removes the budgetary and environmental burden of removal to landfill.

All you need for cleaning the new surface is water; no more harsh treatments and stripping chemicals. Wearmax is environmentally-considerate.

# ECONOMIC

A highly cost-effective solution to flooring needs, Wearmax restoration is **faster to implement** than replacement, **reducing disruption** and interruption to your services.

Replacing floors can typically put working areas out of use for up to 7 days. Labour-saving Wearmax can have a floor typically back in use **within 1-3 days**, depending on repairs and colour/design requirements: that's a saving in time of **up to 80%**.

Some areas can continue to be used during application; corridors, for example, can be treated half width at a time.

Wearmax offers to **60% on replacement** Capex with savings of up to **50% on cleaning labour** costs, up to **90% on chemical usage and waste**; and there's no need for polishing, buffing, stripping or sealing.

# AESTHETIC

Wearmax not only brings existing designs back to life. Choose from our range of **RAL standard colourings** to import a fresh, new aesthetic back into your workplace. There's more...

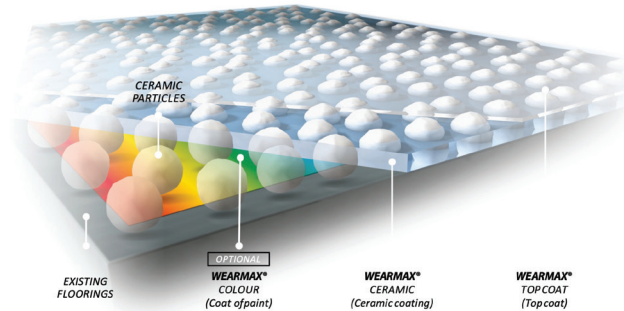


Opt for a **flecked finish**. Designate different colours to denote specific floor levels and user areas.

**Embed graphics** into your floor: logos, directional arrows, health & safety messaging.

A treatment of Wearmax opens the door to endless design possibilities and makes even the most worn out floor look like new.

# SAFE, HIGH PERFORMANCE



**Wearmax is a user-friendly solution: allergen-free, it's hermetically-sealed upon application.**

**It comes with a 10-year warrantee, offering long-term protection against signs of wear and scratches.**

**It reduces the appearance of traffic lines and black marks and provides increased wear layer scratch resistance with slip resistance typically 36+ (BS7976), wet or dry.**

**That's Wearmax - a compliant flooring solution that's both a pleasure to look at and use.**

WEARMAX® CERAMIC COATING by Samsic

Available in the UK via Samsic, Wearmax is one of many building maintenance and care innovations supplied by us. We are a global provider of facility management and human resource support services with 3000+ team members managing the needs of over 1700 customer sites in the UK via 12 regional offices.

And we have extensive experience of leisure building needs.

# YOUR NEXT STEP

Find out more about **Wearmax in Leisure:**

## Visit

[www.wearmaxbysamsic.co.uk](http://www.wearmaxbysamsic.co.uk)

## Call

(in the UK) 0800 678 1170

## Email

[wearmax@regentsamsic.com](mailto:wearmax@regentsamsic.com)

**WEARMAX<sup>®</sup>** by  
*High Performance Ceramic Coating*



[www.wearmaxbysamsic.co.uk](http://www.wearmaxbysamsic.co.uk)